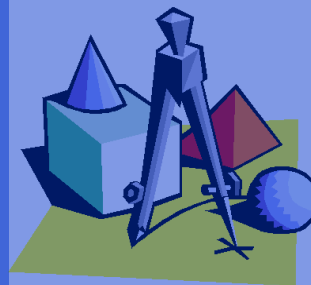


# MATH 3315 - 3316

## ADVANCED ALGEBRA 2

### Course - Information



*Push the Pride: Be Responsible, Be Respectable, Be Positive!*

#### Mrs. Aguinaga, Mr. Falinski, Ms. Ortiz & Mr. Tollberg

Available Office Hours – Room 110

[Janice.Aguinaga@D300.org](mailto:Janice.Aguinaga@D300.org) (224) 484-5148

2<sup>nd</sup>, 6<sup>th</sup>, & 9<sup>th</sup> Periods

[Sebastian.Falinski@D300.org](mailto:Sebastian.Falinski@D300.org) (224) 484-5154

2<sup>nd</sup>, 6<sup>th</sup>, & 9<sup>th</sup> Periods

[Mariana.Ortiz@d300.org](mailto:Mariana.Ortiz@d300.org) (224) 484-5166

1<sup>st</sup>, 4<sup>th</sup>, & 6<sup>th</sup> Periods

[Andrew.Tollberg@D300.org](mailto:Andrew.Tollberg@D300.org) (224) 484-5169

3<sup>rd</sup>, & 6<sup>th</sup>, & 8<sup>th</sup> Periods

Before & After school by appointment.

Welcome to the world of mathematics! We are very excited to start the year, and we are looking forward to working with you on your academic journey. There are three things that we will emphasize this year: **Respect, Collaboration, and Perseverance.**

#### Course Description

This rigorous course includes a review of first year algebra and all essential topics for a second year algebra course. There is emphasis on solving open sentences, word problems, and graphing. New topics include thorough introductions to exponential, logarithmic, and polynomial functions and their graphs. Quadratic equations, complex numbers, rational exponents, and radical equations will also be examined. Additional topics to be discussed are sequence and series, statistics, and trigonometry. **It is mandatory for students in this class to have access to a graphing calculator.** The recommended model is the TI-83-Plus or TI-84.

#### Course Materials

- Basic school supplies (e.g. writing utensil, paper, binder recommended, etc)
- Graphing calculator (TI 83/84 Plus preferred)

#### Class Expectations

- Respect is the number one rule in the classroom. This includes, but is not limited to, respecting the teacher, other students, and school property.
- Attendance is crucial to your success in the classroom. You should do your best to attend each class and arrive on time. The student is responsible for any missed material and/or assignments.

- Technology, including but not limited to netbooks and mobile devices, must be used for educational purposes only. If the student is found misusing these devices, the device will be confiscated and consequences will be enforced.
- Academic dishonesty will not be tolerated. Consequences will follow the DCHS Student Handbook.

## Homework

- Homework will be assigned and should be completed on a regular basis. The purpose of homework is for practicing and reinforcing the concepts learned in class. It is essential that students practice the material as mathematics is a cumulative subject. We continuously build upon what we have learned, and the most successful students achieve mastery on a topic through practice, reflecting on feedback, making corrections, and frequently asking questions.
- With Homework playing such an important role in your understanding, homework may be checked in the following ways:
  - Collected.
  - Checked for completion.
  - Homework Quiz.
  - Collected before the Unit Assessment.
- Homework should be used for questioning, discussing, and correcting problems which will help students self-assess their understanding of the material before the Unit Assessment.

## Assessments

- Formative and summative assessments will be given during each unit. These assessments will be based on the course learning targets and will allow students to demonstrate their mastery of these targets. Formative assessments (quizzes) will be used to provide written feedback on student's performance on the material and appropriate amount of time will be given to correct mistakes in preparation for the summative assessment.

## Grading

- Your grade will be determined by your achievement on the assessments.

Homework – 10%      The main purpose of homework is for students to receive the necessary practice to ensure success on assessments. Homework will be graded by various.

Assessments – 70%      Quizzes will be used to provide descriptive feedback on skills leading up to learning targets and understanding of materials. Tests will be used to check for mastery of learning targets at the end of each unit.

Final Exam – 20%

- The grading scale is as follows:

**A = 100% - 90%**

**B = 89% - 80%**

**C = 79% - 70%**

**D = 69% - 60%**

**F = 59% & under**

- Our goal is that a student's grade truly reflects his or her understanding of the main concepts and the ability to successfully complete required calculations instead of a tabulation of points earned on given assignments.

## Extra Help

- It has been said that it is easier to keep up than to catch up. With that in mind, should a student experience any difficulty in class, WE strongly encourage him/her to seek extra help from the teacher, a tutor, or a trustworthy classmate. Please make an appointment as soon as you realize you need help.
- Before or after school help with your teacher is available in room 110, the mathematics office, by appointment. Please e-mail or see us during class to schedule your meeting. (If you use email, be sure to fill in the subject field, or your email will be caught in the spam filter.)

## Additional Information

- Parents/Guardians: I welcome the opportunity to discuss your son/daughter's progress in my class. Please do not hesitate to contact me. I look forward to working together on a successful year.

Dear Parent(s) and/or Guardian(s),

The course syllabus reflects goals and objectives of Algebra 2. Please read the syllabus along with the classroom expectations with your child and complete the information below. Thank you.

### MATH 3315 - 3316: Algebra 2

I have read and understand the expectations as presented in the MATH 3315 - 3316: Algebra 2.

Student's name (print) \_\_\_\_\_

Student's signature \_\_\_\_\_

Parent's name (print) \_\_\_\_\_

Parent's signature \_\_\_\_\_

Best phone number to reach a parent \_\_\_\_\_

Second best phone number to reach a parent \_\_\_\_\_

Best email to reach a parent \_\_\_\_\_

Which form of communication is best to reach a parent?

Telephone

Email

Please state or list any concerns or requests for class.

•

•